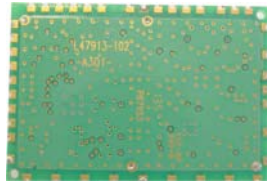
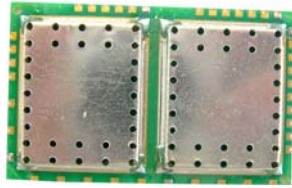
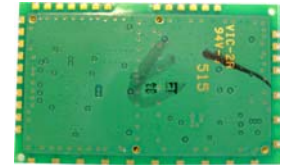
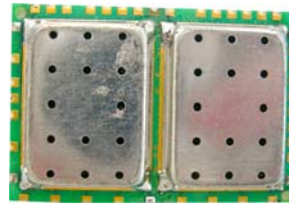


## **DECT RF module**

**Model No.: Pro-65 / 66 / 67 / 80**



**Pro-65 / 66**



**Pro-67 / 80**

### **General Specifications:**

#### **Dimension:**

- Pro-65 66:43.6 \* 27.0 \* 4.0 mm
- Pro-67 80:37.6 \* 25.6 \* 4.0 mm

**Weight:** Under 20 g

#### **Temperature:**

- 0° C ~ 40° C (Standard Operating)
- -10° C ~ 60° C (Storage)

#### **Chip set:**

- Pro-65 Transceiver Philips UAA3545 / Power Amplifier Philips CGY2032
- Pro-66 Transceiver Philips UAA3545 / Power Amplifier Philips UAA3595
- Pro-67 Transceiver Philips UAA3546 / Power Amplifier Philips UAA3595
- Pro-80 Transceiver Philips UAA3548 / Power Amplifier Philips UAA3595

### **DECT Specifications:**

**Standard:** DECT (Digital Enhanced Cordless Telecommunications)  
GAP (Generic Access Profile)

**Radio Frequency range:** 1880~1900 MHz

**Channel Space:** 1728Khz

**Bit rate:** 1152Kbit/s

**RF channels:** 10 Channels

**Modulation:** GFSK

**Voice coding:** ADPCM, 32Kbit/s

**Transmitted power:** 10mW